



The Growing Edge

Greater Statesville Development Corporation

In This Issue

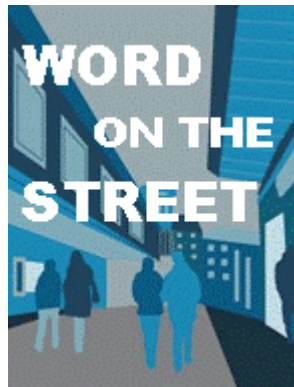
**KECO COATINGS' EXPANSION
PLANS ON SCHEDULE**

**CHARLOTTE REGIONAL
PARTNERSHIP NAMES VP OF
INVESTOR RELATIONS**

**COMMSCOPE UNIT LANDS
SINGAPORE RAIL CONTRACT**

Issue: # 2

SEP 08 '08



The Answer Is Blowing in the Wind... Maybe

Among all renewable energy technologies, wind power is currently the most cost-competitive when compared with traditional technologies for production of fossil-fuel-based energy. In fact, around the world, wind power is the fastest-growing energy source, and a Statesville-based company is playing a major role in that

development. Abundant Manufacturing produces gears and other close-tolerance machined parts for use in wind turbines.

According to the American Wind Energy Association, at the beginning of 2007, the United States had a total of 2,600 megawatts of installed wind power capacity, equivalent to about three or four large coal-fired power plants. Installations in the last quarter of 2007 brought the year's total to 5,244 megawatts. Between 2000 and 2007, the amount of electricity that the country got from wind more than quadrupled, but wind projects still generate less than 1 percent of the nation's electricity.

Texas has the greatest wind energy of any state, followed by California, Minnesota, Iowa, and Washington. North Carolina offers one of the most promising



Hot Topics

The Growing Edge goes blogging. Starting Friday, September 26th, The Growing Edge will be offered as a blog at

thegrowingedge.wordpress.com.

Blogs, or weblogs, are online forums with regular entries of commentary, descriptions of events, or other material such as graphics or video. Entries are commonly displayed in reverse-chronological order. The Growing Edge blog will feature articles on economic development and local business, similar to those found in The Growing Edge e-newsletter, but will be updated on a more regular basis, will include content not found in the e-newsletter and will allow readers to comment on articles or post their own content.

Mike and John will be representing Greater Statesville at the NCEA **Fall Conference** in Concord (NC) September 22-23.

John will be hosting the next

Breakfast Buzz on Tuesday, November 18th from 8-9 at Mitchell Community College in Statesville, North Carolina. The topic will be determined by a poll. Click [here](#) to vote for a topic of interest to you.

Save The Date

September 22-23, 2008

NCEDA Fall Conference
Embassy Suites
Concord, NC

October 22, 2008

Committee of 100 Luncheon
Speaker: Alankar Naik, Global Operations & Supply Chain Doosan Infracore Portable Power
Noon - 1:30 PM
Civic Center
Statesville, NC

November 13-14, 2008

Transitions '08 Nonprofit Conference
Mitchell Community College
Statesville, NC

November 18, 2008

Breakfast Buzz: Topic TBD
8 AM - 9 AM
Mitchell Community College
Statesville, NC

locations on the East Coast for wind power. Locations along mountain ridgelines and near sounds and coastal areas show the greatest potential, and even areas which are not ideal for wind power generation, such as rural Iredell County, could support small-scale wind energy projects. But despite the excellent opportunities of each region, challenges exist in permitting wind turbines.

The first challenge is a regulatory barrier called the North Carolina Mountain Ridge Protection Act, which has restricted building on North Carolina's mountain ridges above 3,000 feet. Although the intention of the law is to maintain the natural beauty of North Carolina's mountains, it creates obstacles for wind energy, given an interpretation of the original statute issued by the North Carolina Attorney General's Office. The best wind areas in western North Carolina fall into zones protected by the Mountain Ridge Protection Act.

Local lawmakers have begun taking matters into their own hands. In August 2006, Watauga County became the first in the state to address the siting of wind facilities, with development requirements and a local permitting process for limited turbine development. Also in 2006, Ashe County commissioners adopted a new ordinance regulating the size and the placement of wind power systems in unincorporated areas of the county. In June 2007, the western North Carolina resort town of Blowing Rock banned wind turbines because of concerns that the towers would obstruct mountain views. Other counties may follow suit, compounding existing statutory barriers with a low level of public acceptance of wind development projects in western North Carolina.

Just For Fun



Carolina Panthers Kick -Off Contest Winner

Gregory Mason was the winner of our Panthers Kick-Off Contest, correctly guessing the score of the Panthers-Bears game as 20-17.

Wind facilities can be sited in three other locations: the coastal plain, state waters, and federal waters, offshore. Each location has its own local, state, and federal jurisdictional requirements. The best potential for wind power in North Carolina is near the ocean or the sound close to transmission lines for electricity distribution. However, high winds and water turbulence can easily damage ocean-based and coastal wind turbines. Thus, inland coastal regions or sites around the sounds are much more attractive. Making sounds even more appealing is the ease of acquiring permits for the largely undeveloped land.

Onshore wind-power projects in North Carolina require permitting through the CAMA process and must meet any county zoning and construction requirements. North Carolina is currently considering three such projects around Morehead City. In the wake of recent proposals, in March 2008 the Carteret County Commissioners issued a nine-month moratorium on issuing permits to build windmills, to allow the county time to develop and consider regulations.

Greg (pictured above) was the only participant who got the score exactly right.

Thanks to everyone who participated. We will probably be holding a similar contest in conjunction with the Panthers Monday Night game against Tampa Bay in November.

Quick Links

[GSDC Website](#)

[The Growing Edge Blog](#)

[Mitchell Community College Website](#)

[PSNC Website](#)

Join Our List



There are currently no plans to build wind turbines in Iredell County, and the lack of a consistent wind source -- as generated by temperature gradations near mountains and oceans -- and our gently rolling topography make large-scale wind energy investment here unlikely. However, several companies manufacture small wind turbines for use by individual homes and businesses. A 1.5 kilowatt home system, which costs around \$20,000 to purchase and install, can supply all the electricity for an average household, given a 14 mile-an-hour average daily wind speed, or up to 50% of that energy requirement at 10 miles-an-hour. Given the current low cost of electricity in this area, such an investment would not make sense on a purely financial basis (the payback would be 7-15 years), but might appeal to rural residents who value energy "independence," or for environmental reasons.

KECO COATINGS' STATESVILLE EXPANSION PLANS ON SCHEDULE

FIRST PHASE OF PROJECT INCLUDES 10 NEW JOBS AND \$500,000 IN NEW INVESTMENT



KECO Coatings has completed the first phase of expansion for its Statesville, North Carolina facility. KECO finalized its acquisition of Teknix Powder Coating in early December of 2007.

KECO has since expanded the facility by an additional 6,000 square feet and invested over \$500,000 in new equipment to apply Teflon® coatings as well as its signature Kephos process. KECO has also created 10 new production jobs and recruited a new management team.

Founded in 1980, KECO Coatings is a leading developer and applicator of high performance coatings for industries such as printing and packaging, lighting, aircraft, glass container and Racing, and is a licensed DuPont Teflon® Industrial Applicator (LIA).

Headquartered in Indianapolis, Indiana, KECO has sales offices in Charlotte, North Carolina and Tucson, Arizona. KECO President Mike Klinge states, "We are on schedule with the initial phase of activating the Teflon® coating process into our Statesville, North Carolina location, and our customers are already enjoying the benefit of bundling their powder coating and Teflon® coating requirements into one facility. Our capabilities in Statesville will continue to expand as we transition our entire coating

portfolio into this location. We expect to double the size of this facility and create another 10 to 15 jobs over the next five years, if not sooner."

Greater Statesville Development Corporation Chairman David Steele noted that this is the third expansion announcement for an existing Statesville company in the past two months, "It's great to see a local company doing well and expanding. One of the key drivers of employment growth in Statesville is the growth of existing industries. We congratulate KECO on their success and look forward to working with them on their future growth plans."

CHARLOTTE REGIONAL PARTNERSHIP NAMES VP OF INVESTOR RELATIONS

The Charlotte Regional Partnership has hired Cabarrus Economic Development Corp. recruiter Clay Andrews as vice president of investor relations.



The job has been expanded from director of community relations, a post previously held by Leslie Kelson. She left the partnership to pursue other endeavors. Andrews will join the partnership Oct. 1.

"This is a key role for the partnership, not only because about half our financial support comes from our private investors, but because engaged investors make us a stronger organization and a more competitive region," says Ronnie Bryant, president and chief executive of the partnership.

"Clay embodies the business, community and civic involvement - and fervent commitment to regionalism - that we need in our vice president of investor relations."

Andrews has 20 years experience in commercial real estate and economic development in the Charlotte region. He is a past executive director of the Rock Hill Economic Development Corp. and joined the Cabarrus development group in 2005.

In Cabarrus, he recruited projects such as the \$40 million Wind Shear wind tunnel and led initiatives that restructured the county's economic-development incentives. He also facilitated a cost-sharing agreement between local governments and the owners of The International Business Park at Concord. The pact made nearly 100 acres of new sites available for development.

The Charlotte Regional Partnership is a 16-county public/private economic-development organization that markets the Charlotte region.

COMMSCOPE UNIT LANDS SINGAPORE RAIL CONTRACT

Andrew Corp. has been awarded a contract to upgrade the communications infrastructure on one of Singapore's Mass Rapid Transit rail lines. Financial terms weren't disclosed.



The upgrade is designed to provide commuters with better overall wireless coverage and reception, as well as greater bandwidth and download speeds. It is intended to enable commuters to make full use of mobile applications such as video calls, video and music downloads and Internet services.

Illinois-based Andrew designs and makes communications equipment and systems at facilities in 35 countries. It operates as a subsidiary of Hickory-based CommScope Inc. (NYSE:CTV), which produces cabling systems for business-enterprise applications.

[Forward email](#)

✉ **SafeUnsubscribe®**

This email was sent to john.marek@jbmarek.com by jmarek@greaterstatesville.org.
[Update Profile/Email Address](#) | Instant removal with [SafeUnsubscribe™](#) | [Privacy Policy](#).

Email Marketing by



Greater Statesville Development Corporation | 115 East Front Street | Statesville | NC | 28677